

Capsule pressure gauge with electrical output signal Stainless steel, safety version, high overpressure safety Models PGT63HP.100 and PGT63HP.160

WIKA data sheet PV 16.06



for further approvals
see page 2

intelliGAUGE®

Applications

- Pressure measurement at very low pressures
- Acquisition and display of process values for the control room, 4 ... 20 mA, 0 ... 20 mA or 0 ... 10 V
- For gaseous, aggressive media, also in aggressive ambience
- Easy-to-read, local analogue display with Ø 100 mm or Ø 160 mm, no external power supply needed

Special features

- "Plug-and-play" with no configuration necessary
- High overpressure safety up to 50 x full scale value
- Measuring chamber protected against unauthorised intervention
- Minimal influence on function and measuring error from pressure medium contamination



Capsule pressure gauge model PGT63HP.100

Description

At any point where very low pressures have to be indicated locally, and, at the same time, a signal is wanted to be transmitted to a central controller or remote control room, the model PGT63HP intelliGAUGE (US Patent No. 8,030,990) can be used.

Even if the power supply is completely lost, the process pressure can be read securely. The rugged design of the capsule measuring system has an overpressure safety of up to 50 times the full-scale value.

An electronic angle encoder, proven in safety-critical automotive applications, determines the position of the

pointer shaft - it is a non-contact sensor and therefore completely free from wear and friction.

From this, the pressure-proportional electrical output signal, e.g. 4 ... 20 mA, is produced. The electronic zero point can also be set manually.

The electronic WIKA transmitter, integrated into the high-quality mechanical pressure gauge, combines the advantages of electrical signal transmission with the advantages of a local mechanical display.

Standard version

Nominal size in mm

100 and 160

Accuracy class

1.6

Scale ranges

0 ... 2.5 to 0 ... 100 mbar
or all other equivalent vacuum or combined pressure and vacuum ranges

Process connection (wetted)

Stainless steel 1.4571
Lower mount (LM)
G ½ B (male), 22 mm flats

Pressure element (wetted)

Stainless steel 1.4571

Measuring chamber (wetted)

Stainless steel 1.4571

Sealing (wetted)

PTFE

Movement

Brass

Dial

Aluminium, white, black lettering

Pointer

Adjustable pointer, aluminium, black

Zero adjustment

By means of adjustable pointer (adjustment appliance with gauges with switch contacts)
Electronic: see operating instructions

Case

Stainless steel, ingress protection IP 54

Window

Laminated safety glass

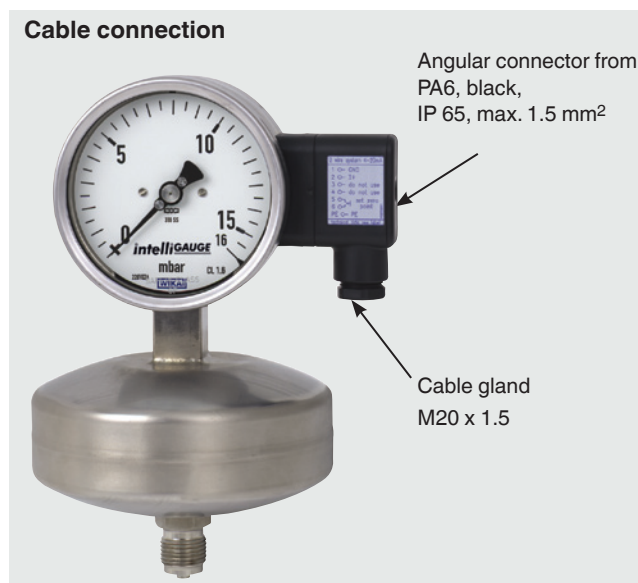
Bezel ring

Cam ring (bayonet type), stainless steel

Options

- Other process connection
- Sealings (model 910.17, see data sheet AC 09.08)
- Mounting bracket for wall or pipe mounting (data sheet AC 09.07)
- Panel or surface mounting flange (observe measuring chamber!)
- Higher overpressure safety ¹⁾
- Switch contacts (data sheet AC 08.01)

1) After feasibility test



CE conformity

EMC directive

2004/108/EC, EN 61326 emission (group 1, class B) and interference immunity (industrial application)

ATEX directive ²⁾

94/9/EC, II 2 G Ex ia IIC

Approvals

- GOST-R, import certificate, Russia
- CRN, safety (e.g. electr. safety, overpressure, ...), Canada

Certificates ²⁾

- 2.2 test report per EN 10204 (e.g. state-of-the-art manufacturing, material proof, indication accuracy)
- 3.1 inspection certificate per EN 10204 (e.g. material proof wetted parts metal component, indication accuracy)

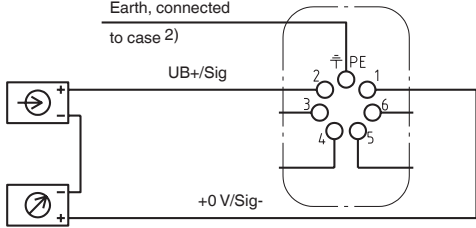
2) Option

Approvals and certificates, see website

Specifications

intelliGAUGE models PGT63HP.100, PGT63HP.160

Electrical data

Power supply U_B	DC V	$12 < U_B \leq 30$ (min. 14 with Ex version)
Influence of power supply	% FS/10 V	≤ 0.1
Permissible residual ripple of U_B	%	≤ 10
Output signal	Variant 1 Variant 2 Variant 3 Variant 4	4 ... 20 mA, 2-wire, passive, per NAMUR NE 43 4 ... 20 mA, per ATEX Ex II 2G Ex ia IIC T4 / T5 / T6 0 ... 20 mA, 3-wire 0 ... 10 V, 3-wire
Permissible max. load R_A	Variant 1 - 3 Variant 4	$R_A \leq (U_B - 12 \text{ V})/0.02 \text{ A}$ with R_A in Ohm and U_B in Volt, however max. 600 Ω 100 k Ω
Effect of load (variant 1 - 3)	% FS	≤ 0.1
Impedance at voltage output		0.5 Ω
Electrical zero point		through a jumper across terminals 5 and 6 (see operating instructions)
■ Long-term stability of electronics	% FS/a	< 0.3
■ Electr. output signal		≤ 1 % of the measuring span
Linearity	% of span	≤ 1.0 % (terminal method)
Resolution		0.13 % of full scale value (10 Bit resolution at 360°)
Refresh rate (measuring rate)		600 ms
Safety-related maximum values		Ex version
■ Power supply U_i	DC V	max. 30
■ Short circuit rating I_i	mA	max. 100
■ Power P_i	W	max. 1
■ Internal capacitance C_i	nF	12
■ Internal inductance L_i	mH	negligible
Electrical connection		via angular connector, 180 ° rotatable, wire protection, cable gland M20 x 1.5, incl. strain relief, connection cable: Outer diameter 7 ... 13 mm, conductor cross-section 0.14 ... 1.5 mm ² , temperature resistance up to 60 °C
Assignment of terminals, 2-wire (variant 1 and 2) ¹⁾		 <p>1) For 3-wire connection see operating instructions</p> <p>2) This connection must not be used for equipotential bonding. The instrument must be incorporated in the equipotential bonding via the process connection.</p>

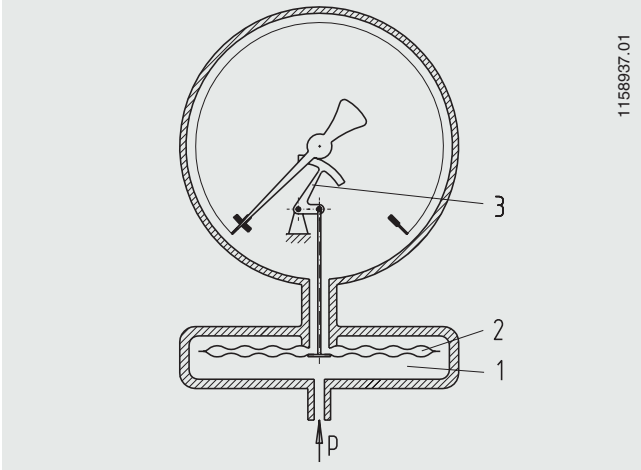
Mechanical data

Display		Nominal size 100 and 160
Scale ranges	mbar	0 ... 2.5 mbar to 0 ... 100 mbar
Process connection		G 1/2 B (male) (others available as options)
Operating limits		Overload resistance to EN 837-3
Pressure limitation		
■ Steady		full scale value
■ Fluctuating		0.9 x full scale value
■ Short time		50 x full scale value
		The recommendations for the use of mechanical pressure measuring systems in accordance with EN 837-2 must be observed
Accuracy		
■ Mechanical display		≤ 1.6 % of measuring span (class 1.6 per EN 837-3)
Permissible temperature range		
■ Medium	°C	-20... +100
■ Ambient	°C	-20 ... +60
Temperature effect	% / 10 K	max. ± 0.6 of full scale value (when the temperature deviates from 20 °C reference temperature)
Case ingress protection		IP 54 per EN 60529 / IEC 529

Design and operating principle

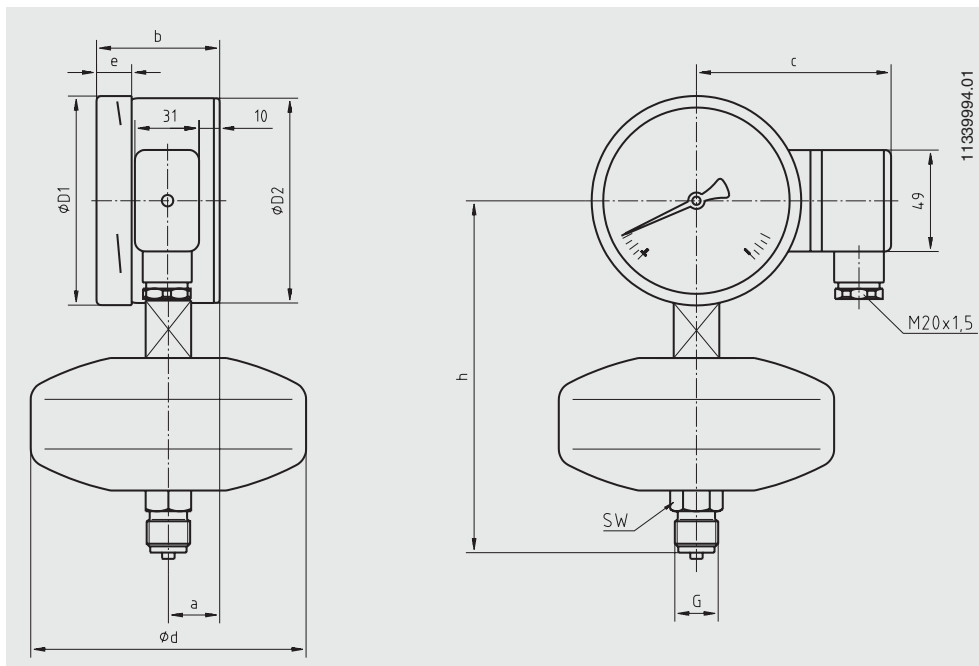
- Pressure-sealed measuring chamber (1) with capsule measuring element
- The capsule element (2) is pressurised from outside and moves in strokes (deflection)
- The deflection is transmitted to the movement (3) and indicated
- The overpressure safety is achieved through the mutually supporting surfaces of both halves of the capsule element

Illustration of the principle



Dimensions in mm

Standard version



NS	Dimensions in mm										Weight in kg
	a	b	c	d ₁	D ₁	D ₂	e	G	h ±1	SW	
100	25	59.5	94	133	101	99	17	G ½ B	170	22	1.6
160	25	65	124	133	161	159	17	G ½ B	200	22	2.1

Ordering information

Model / Nominal size / Scale range / Output signal / Options

© 2008 WIKA Alexander Wiegand SE & Co. KG, all rights reserved.
The specifications given in this document represent the state of engineering at the time of publishing.
We reserve the right to make modifications to the specifications and materials.



WIKAI
WIKAI Alexander Wiegand SE & Co. KG
 Alexander-Wiegand-Straße 30
 63911 Klingenberg/Germany
 Tel. (+49) 9372/132-0
 Fax (+49) 9372/132-406
 E-mail info@wika.de
 www.wika.de